

ILKLEY MANOR HOUSE

Trails, walks and augmented reality – even when the house is closed there is plenty to do



**Free Wifi Network:
_IlkleyFreeWifi**

At present the Manor House is only open at weekends between 11am and 4pm, but even when the house is closed there is still plenty to see and do.

Information about the house and site

There are 4 very informative interpretation boards around the Manor House – 2 at the front which tell you about the house and 2 at the back that have information about the Roman fort and how the Romans lived when they settled in Ilkley. Here you can see the remains of the fort, including a section of the Roman wall. There are also gate markers indicating the position of the fort’s entrances.

There is a blue plaque on the Manor House. Look up to admire the refurbished lantern at the front of the house.



As well as the interpretation boards there is a QR code to the right of the front door which your smartphone can read and will take you to a short film narrated by local historian, Professor Mike Dixon, who takes you on a tour round the outside of the Manor House explaining about the architecture of the building and how it has changed over time.

Discover Ilkley Manor House

Did you know...

- Ilkley Manor House is a Grade I Listed building formerly known as **The Old Castle**. The site has 2000 years of human history.
- Even before the **Roman Governor Agricola** built a wooden fort on this site in around 80 AD, it was probably an important **Iron Age site for the Brigantes**, a native Celtic tribe.
- After the Romans left in 432 AD it was eventually chosen as the site of the 14th-century **Manor House**.
- It was altered over the years and the cottages in the courtyard were built in the **Victorian** era.
- Local benefactor **Percy Dalton** bought it in 1944 and donated it to Ilkley in 1959. This prevented it from being demolished as it was declared unfit for human habitation a few years prior.
- It is now run by the **Ilkley Manor House Trust** as a volunteer-led organisation.

Walk around the Manor House
 Walk around the Manor House to see the remains of the Roman fort. The Roman fort can be found on the east side of the Manor House. The Roman wall can be seen in the park behind the house.

Did you know there is a public toilet here?
 A public toilet is located in the park behind the house.

The Roman Wall
 A section of the Roman wall is visible in the park behind the house.

The Roman Wall
 A section of the Roman wall is visible in the park behind the house.

Continue your visit to Ilkley...

- Visit the **Manor House** when you are in the area.
- Visit the **Manor House** when you are in the area.
- Visit the **Manor House** when you are in the area.
- Visit the **Manor House** when you are in the area.

Come back soon!

Bring us back soon, you will be able to see the Manor House again. We are open every day and we have plenty of things to see and do. Bring us back soon, you will be able to see the Manor House again.

Ilkley Manor House



We also have a number of interesting heritage walks that start at the Manor House that can be downloaded from the website – <https://www.ilkleymanorhouse.org/walks-and-trails/>

The walks cover topics such as the Roman Fort, Victorian Ilkley, Ilkley Riverside and Ilkley Inland Spa. There is also a Photo Trail for those who wish to venture further afield.

These can all be downloaded and printed at home or viewed on your phone.

Origins of Ilkley Augmented Trails

The Manor House is one of 8 locations around Ilkley featured on the Discover Ilkley 'Origins of Ilkley' augmented trail.



To see Ellis Ickeringle, a past resident of the Manor House, come alive on your smart phone and tell you some of the history of the buildings, along with images of how The Manor House has changed over the years, simply download the FREE Discover Ilkley app from the Apple Store / Google Play store and follow the instructions.

Once you have downloaded the app, click on the right arrow in the top panel until you see Origins of Ilkley.

Medieval Garden

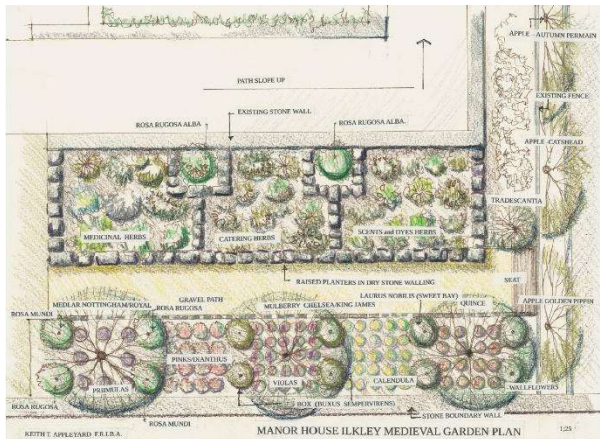
To the West of the Manor House was a small untidy plot of land, now being turned into a Medieval Garden.

Volunteer Keith

Appleyard has spent

many hours researching the plants and planting schemes that would have been used in

gardens during medieval times. The plan that he created for the garden is shown here.



For younger visitors

There is normally a trail for young visitors in the courtyard.

Information about these trails and other events for younger visitors can be found on the website.

<https://www.ilkeleymanorhouse.org/event-category/family-fun/>

You can also just sit and enjoy the quiet and beauty of the courtyard and the Manor House.

Ilkeley Manor House is a registered charity and donations help us to stay open.

